

LIGHTWAY 6 / GRAZING BAFFLES

SURFACE MOUNTED

The Lightway 6 Grazing Baffles are optically engineered to perform best-in-class grazing capabilities. The luminaire offers a tool to emphasize rough-textured surfaces up to 5m high.

The specially-designed aluminum optics are totally glare free from both longitudinal and transversal sides of the profile, achieving a powerful effect ideal for surfaces of great height for indoor applications.

- Best-in-class vertical surface grazing, Scallop-free lighting from zero start point of vertical surfaces
- Glare-free, transversal shielding angle (76°), longitudinal shielding angle (45°)
- 5 to 10cm from edge of fixture to surface of the wall depending on its height and surface relief. Use of continuous fixtures to within 10cm of side walls



Luminaire

Product Type: Grazer
Body Material: Extruded aluminium

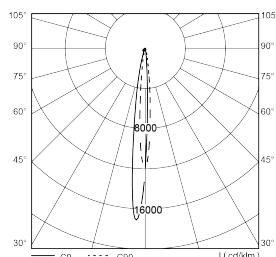
Optics

Optic Type: UV stabilized TIR Lens
Glare Control Device: Aluminium Anti-Glare Baffles and Linear Glare Shield
Surface diffuser: No Diffuser

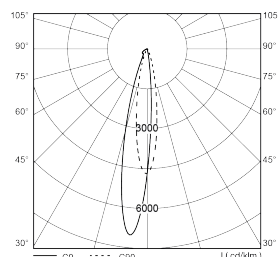
Electrical equipment

Mains Voltage: 220-240 VAC 50/60 Hz
Control Gear Efficacy: > 85%

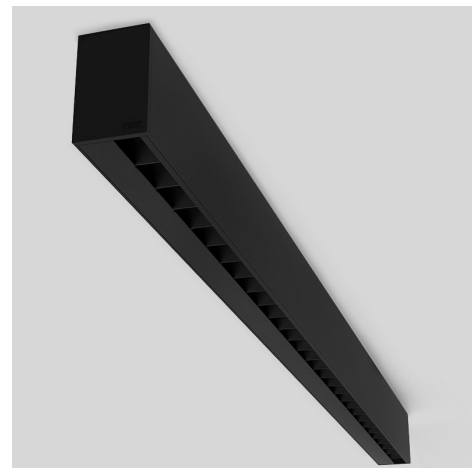
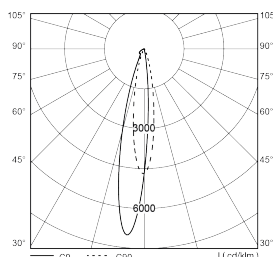
Polar Curve



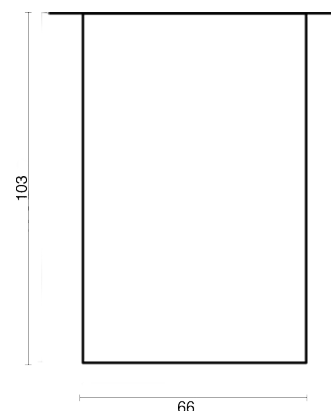
Narrow Beam, 8° /
LOR: 36.8%



Narrow Beam, 15°
/ LOR: 42.7%



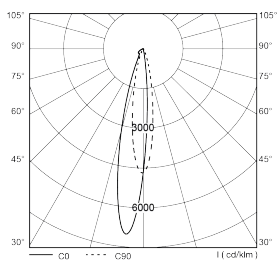
reddot award 2017
winner



We reserve the right to make technical changes without prior notice

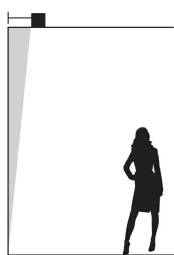
LIGHTWAY 6 / GRAZING BAFFLES

SURFACE MOUNTED



Narrow Beam, 15°
/ LOR: 42.7%

Mounting Ratio



100 to 150 mm

Setback from the wall is defined by wall texture and height. Consult our sales representative for optimal setback according to your project conditions.

We reserve the right to make technical changes without prior notice

LIGHTWAY 6 / GRAZING BAFFLES

SURFACE MOUNTED

Code Index:

<u>L 6</u>	<u>I</u>	<u>S M</u>	<u>---</u>	<u>---</u>	<u>-----</u>	<u>-</u>	<u>2 0</u>	<u>---</u>	<u>N</u>	<u>I</u>	<u>---</u>	<u>-</u>
Family	Environment	Mounting	Application	Beam Angle	CRI/CCT & Power	Control	IP	Body finish	Emergency	Layout	Length	Wiring
			GB	08	927P1	C		BS			30	I
			GG	15	927P2	D		BT			60	B
			GW		927P3	E		WS			90	M
					930P1			WT			120	E
					930P2			GS			150	
					930P3						180	
					940P1						210	
					940P2						240	
					940P3						270	
											300	

Family	Environment	Mounting	Application	Beam Angle	CRI/CCT & Power	Control	IP	Body finish	Emergency
L6 Lightway 6	I Indoor	SM Surface Mounted	GB Black Grazing Baffles GG Gray Grazing Baffles GW White Grazing Baffles	08 Narrow Beam, 8° 15 Narrow Beam, 15°	2700°K 927O1: 20 W/m 1950 lm/m 927O2: 30 W/m 2700 lm/m 927O3: 42 W/m 3600 lm/m 927P1: 20 W/m 1700 lm/m 927P2: 30 W/m 2250 lm/m 927P3: 42 W/m 3000 lm/m 3000°K 930O1: 20 W/m 2150 lm/m 930O2: 30 W/m 3000 lm/m 930O3: 42 W/m 4000 lm/m 930P1: 20 W/m 1700 lm/m 930P2: 30 W/m 2400 lm/m 930P3: 42 W/m 3100 lm/m 4000°K 940O1: 20 W/m 2350 lm/m 940O2: 30 W/m 3200 lm/m 940O3: 42 W/m 4250 lm/m 940P1: 20 W/m 1900 lm/m 940P2: 30 W/m 2550 lm/m 940P3: 42 W/m 3300 lm/m	C Built-in driver, non-dimmable D Built-in driver, DALI E Built-in driver, 1-10V	20 IP20	BS Black Smooth BT Black Textured WS White Smooth WT White Textured GS Gray Smooth	N No Emergency

Layout	Length	Wiring
I I Shape	30 30 cm 60 60 cm 90 90 cm 120 120 cm 150 150 cm 180 180 cm 210 210 cm 240 240 cm 270 270 cm 300 300 cm	I Individual B Beginning M Middle E End

We reserve the right to make technical changes without prior notice