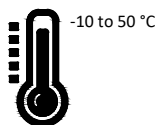


Product Installation guide

IP67



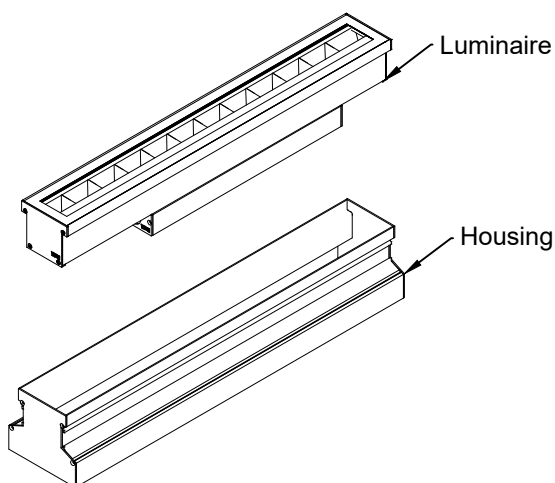
WORKING
TEMPERATURE



MAKE SURE THE POWER
IS OFF DURING INSTALLATION



Class 3
48 VDC input

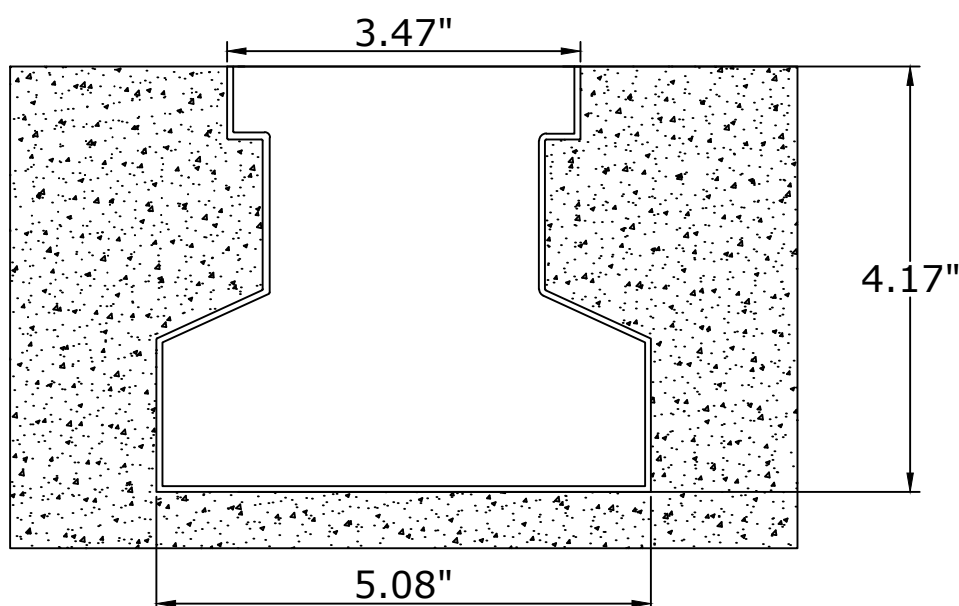


INSTALLATION INSTRUCTIONS

DISCLAIMER

1. Turn off electrical power before starting the installation of the light fixture.
2. The feeding voltage must not exceed the specified fixture voltage.
3. This product must be installed by an eligible electrician.
4. Make sure the luminaire is mounted to a secure structure. Failure to mount the fixture correctly could result in serious injury.
5. The light source of this is not replaceable, When light source reach the end of life the whole luminaire shall be replaced
6. Wear gloves and safety glasses at all times when removing the luminaire from carton, installing, servicing or performing maintenance
7. Do not install damaged product! This luminaire is properly packed to avoid being damaged during transit. Inspect to confirm before installation. Any damaged or broken part during or after assembly should be replaced.
8. Unauthorized repairs or modifications will void warranty.

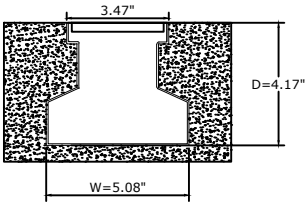
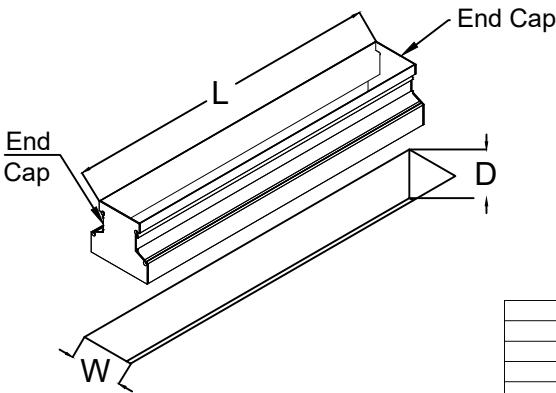
Section View:



Dimensions in Inch

1. Make a hole in the ground as per the following table

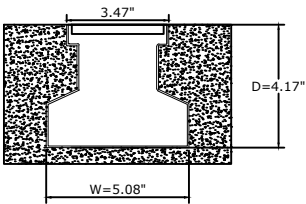
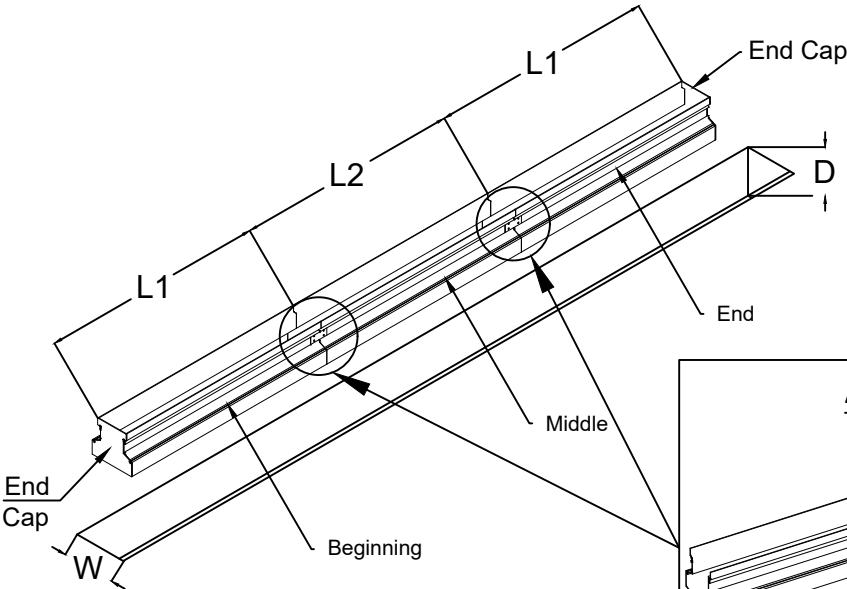
Individual Fixture



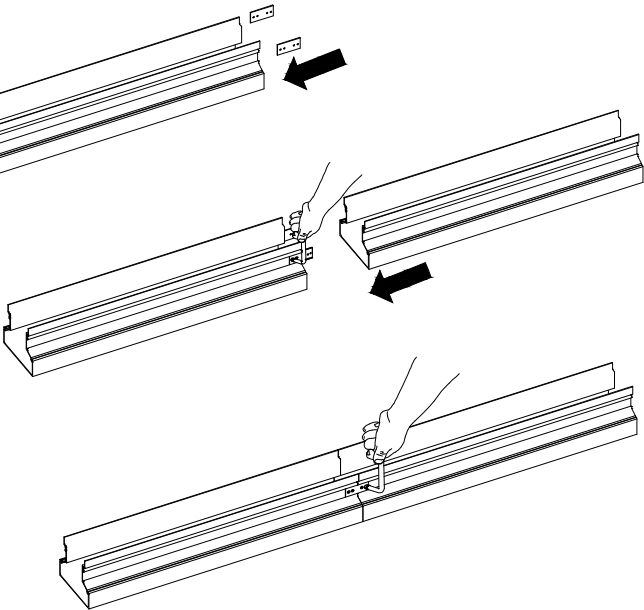
Housing	Length=L
12	12 ±0.04 Inch
24	24 ±0.04 Inch
36	36 ±0.04 Inch
48	47 ±0.04 Inch
60	59 ±0.04 Inch

*Housing for individual fixtures have 2 end caps

Continuous Run



Alignment bracket installation



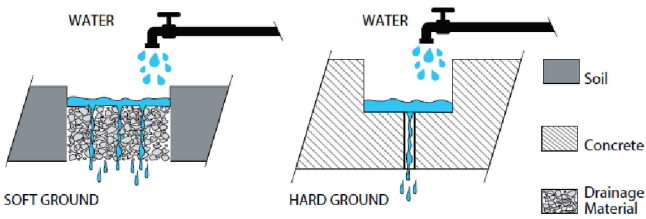
Housing	Length=L1	Length=L2
12	11 ±0.04 Inch	10 ±0.04 Inch
24	23 ±0.04 Inch	21 ±0.04 Inch
36	34 ±0.04 Inch	33 ±0.04 Inch
48	46 ±0.04 Inch	44 ±0.04 Inch
60	57 ±0.04 Inch	56 ±0.04 Inch

*Housing for beginning and end fixtures have 1 end cap
*Housing for middle fixtures doesn't have end caps

2. Prepare water drainage system

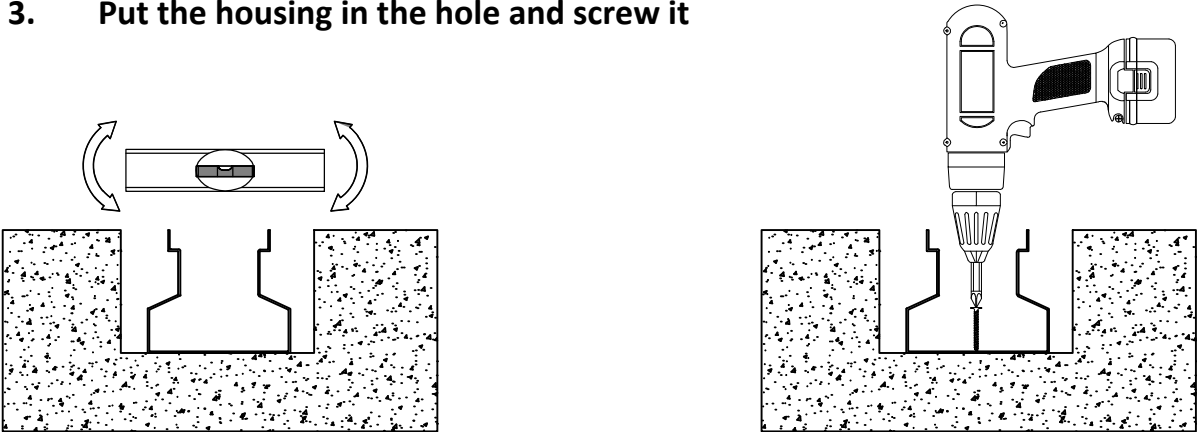
A proper water drainage system is required with a minimum rate of 0.08 GAL (0.33 Liter) per minute per meter as shown below:

Length	Minimum Drainage Rate
1 ft (30cm)	0.026 gal/min (0.1 l/min)
2 ft (60cm)	0.053 gal/min (0.2 l/min)
3 ft (90 cm)	0.079 gal/min (0.3 l/min)
4 ft (120 cm)	0.105 gal/min (0.4 l/min)
5 ft (150 cm)	0.132 gal/min (0.5 l/min)

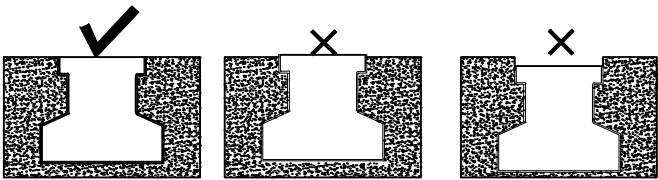


WARNING :
FAILURE TO PROVIDE
PROPER DRAINAGE
WILL VOID PRODUCT
WARRANTY

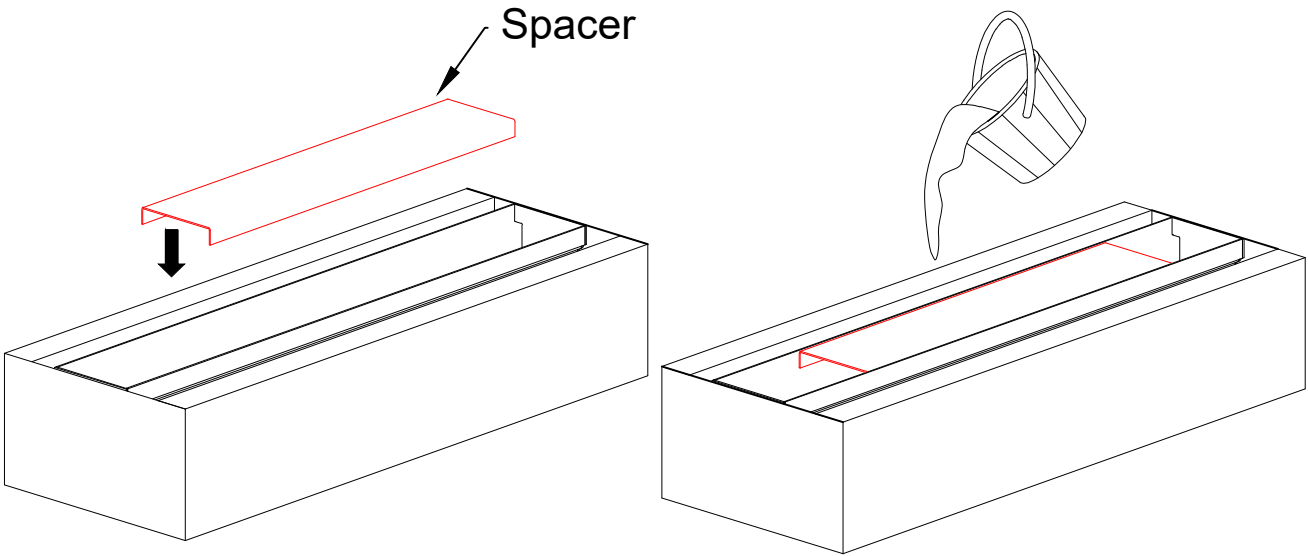
3. Put the housing in the hole and screw it



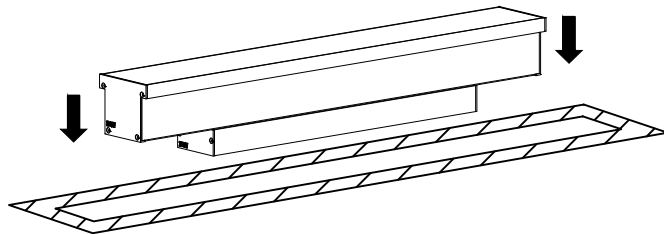
4. Make Sure the surface of the housing is flushed with the ground



5. Housing spacer should be used during installation to avoid housing aperture being deformed by accident

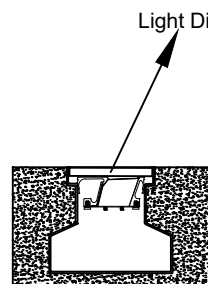


6. Put the luminaire in the housing

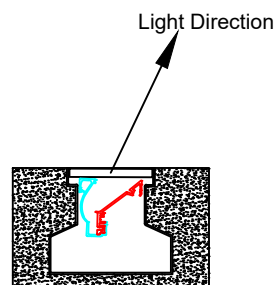


Light direction and the power feeding for asymmetrical optics:

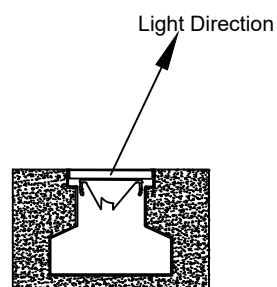
Below section views shows the light direction and the power feeding location for the asymmetrical optic.



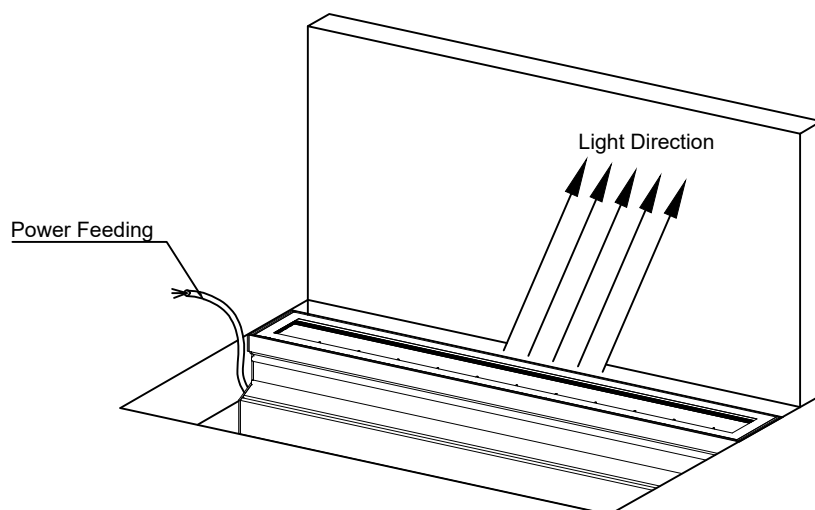
Grazing Baffles



CutOff Washer

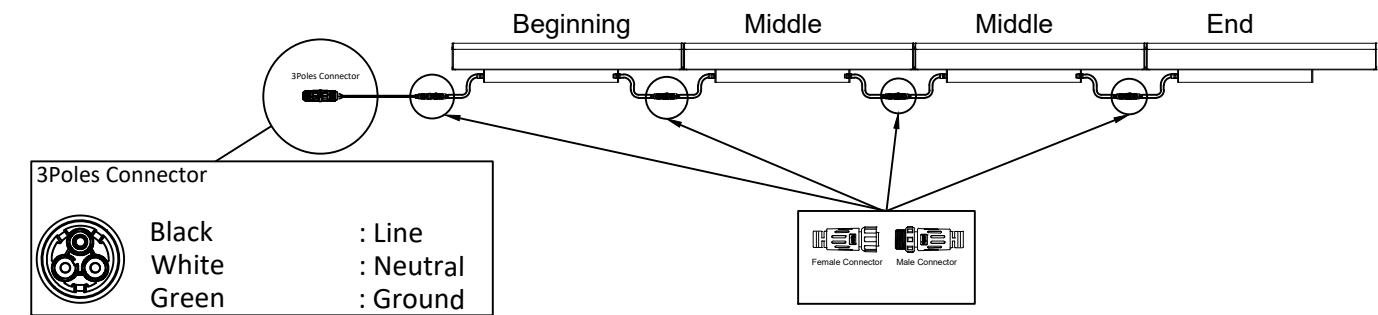


Asymmetrical Lens



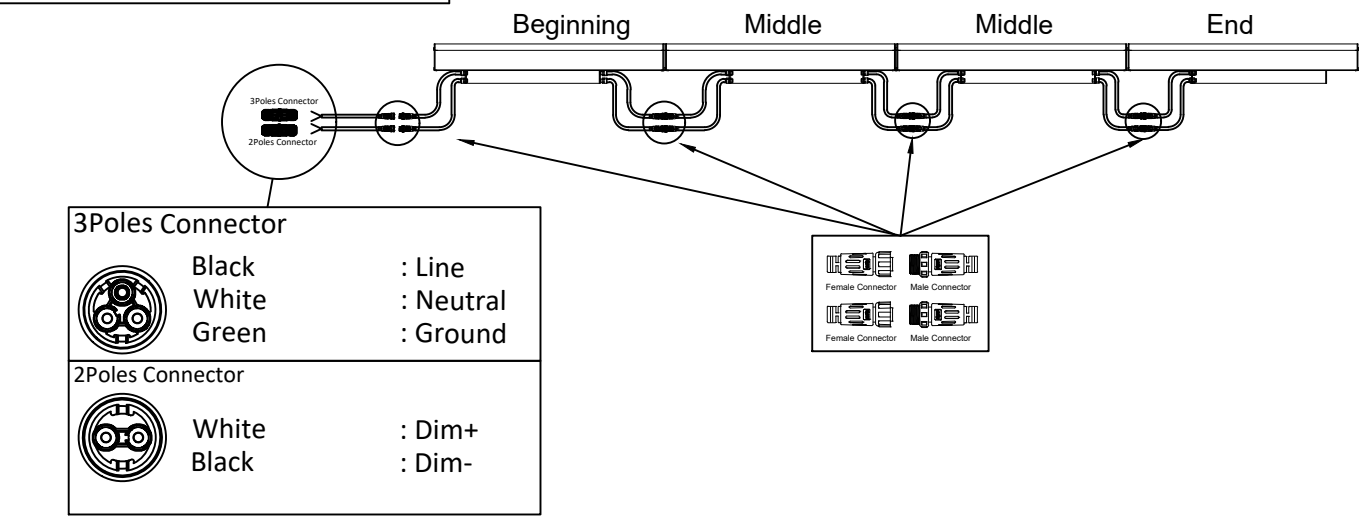
Electrical wiring for continous run

Non Dimmable



Do not exceed 450W per feeding.

Dali or 0/1-10 V Dimmable



Do not exceed 450W per feeding.