



HIGH
PERFORMANCE

MINIMALIST
DESIGN

HUMAN CENTRIC
APPROACH

ZINC DESIGN

Zinc is designed to contrast with the existing bulky and industrial looking linear floodlights and grazers. Where developers tend to use additional architectural details to reduce products visual impact, Zinc offers a high performance outdoor fixture with pleasing aesthetics and modest form.

A HIGH PERFORMANCE TOOL.



MINIMALIST FORM FACTOR

Zinc's small shape allows it to blend smoothly into its surroundings. It is designed with architectural aesthetics and a human-centric approach in mind. Where the section dimensions of this product match the size and proportion of a human thumb, making Zinc suitable for multiple applications.

**ZINC IS DESIGNED WITH
ARCHITECTURAL AESTHETICS
AND A HUMAN-CENTRIC
APPROACH IN MIND.**



ZINC FAMILY

Zinc family offers a range of high performing outdoor lighting tools with pleasing aesthetics & modest design.

Its body shape designed around its optics offers a minimum footprint, high flexibility in tilt adjustment and different fixture lengths.

**ZINC OFFERS A MINIMUM
FOOTPRINT WITH HIGH
FLEXIBILITY.**





HUMAN CENTRIC APPROACH

Zinc presents a modular lighting instrument with outstanding performance, easy to configure systems and exquisite aesthetics.

Zinc features CRI90+ with an array of choices in terms of color temperatures, dimming protocols, optics, beam angles, & lengths. This product can be mounted vertically or horizontally and has a tilt adjustment of +/- 90°, allowing designers to illuminate horizontal, sloped, and vertical surfaces alike.

With its smart control system, Zinc illumination can be adapted perfectly to your mood and meet your energy efficiency requirements. Providing a sense of comfort and enhancing the feel-good factor.

**ZINC PRESENTS A MODULAR
LIGHTING INSTRUMENT WITH
OUTSTANDING PERFORMANCE.**

UNO

Dimensions:
83 x 32 x 141 mm



EASE OF INSTALLATION

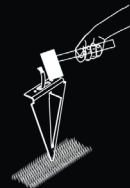
Product

1

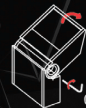
2

3

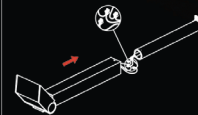
Spike



Surface



Wall



RAY

Dimensions:

306 x 32 x 141 mm
600 x 32 x 141 mm
894 x 32 x 141 mm



EASE OF INSTALLATION

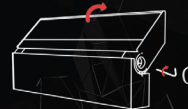
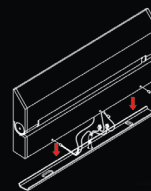
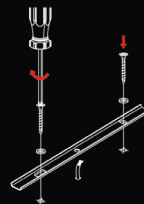
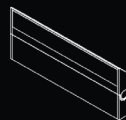
Product

1

2

3

Surface



BOLLARD

Dimensions:

83 x 32 x 600 mm

83 x 32 x 750 mm

83 x 32 x 900 mm



EASE OF INSTALLATION

Product

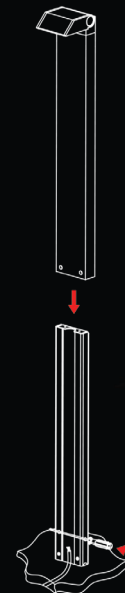
Bollard



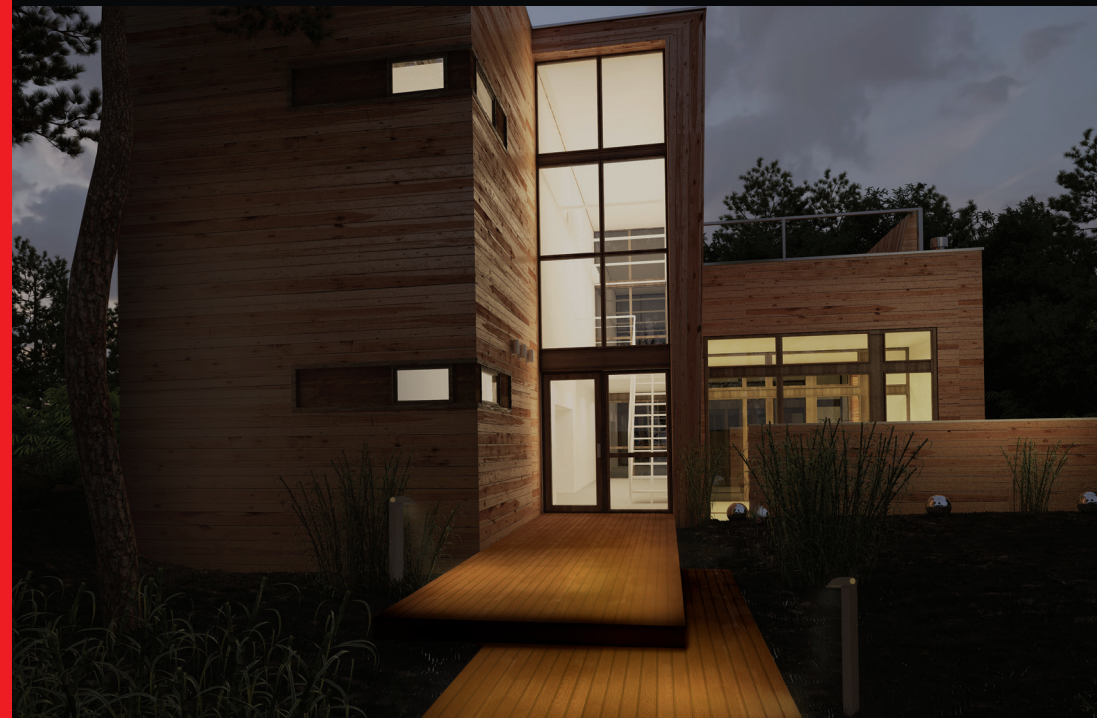
1



2



3



SMART CONTROL SYSTEM

Control your lights with your phone, tablet or smart watch:

- Turn it on and off
- Adjust brightness
- Change color temperature,
- Select and control your lighting fixture in space

ANYWHERE, ANYTIME!



ZINC IN COLORS

To increase the range ability to blend in any architectural scene without leaving a strong physical impact, the fixture comes with various standard and custom color options.



ZINC OPTICS

In spite the compact design Zinc luminaires can host different optics to serve multiple lighting applications.



ZINC OPTICS CUT-OFF WASHER

The Cut-Off Washer marks a breakthrough in wall washing illumination as it offers different outputs with a flawless surface uniformity while blocking the backward and longitudinal light spill. It is glare and light-pollution free!

POWER & LUMEN

Power:
from 28 to 56 w/m

Lumen:
from 1350 to 2700 lm/m

POLAR CURVE



LIGHT EFFECT



ZINC OPTICS GRAZER

The wall grazer is optically engineered to perform best-in-class grazing capabilities. The optic offers a tool to emphasize rough-textured surfaces up to 5m height.

With optional micro-louvers Zinc is totally glare free from both longitudinal and transversal sides, achieving a powerful effect ideal for surfaces of great height for indoor and outdoor applications.

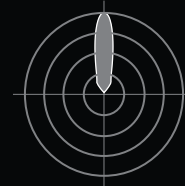


POWER & LUMEN

Power:
from 20 to 42 w/m

Lumen:
from 1200 to 2700 lm/m

POLAR CURVE



LIGHT EFFECT



With Louvre

ZINC OPTICS FLOOD LIGHT

The flood light optics with high-power LEDs generate a powerful overall lighting effect. This modern luminaire is compatible with a wide array of beam angles, ideal for diverse general lighting applications.

POWER & LUMEN

Power:
from 20 to 42 w/m

Lumen:
from 1350 to 6550 lm/m

POLAR CURVE



LIGHT EFFECT



PRODUCT SELECTION

UNO - FLOOD LIGHT

| FAMILY | ENVIRONMENT | MOUNTING | APPLICATION | BEAM ANGLE | LED INSERTS & POWER | CONTROL | IP RATING | BODY FINISH | EMERGENCY | LAYOUT | LENGTH |
|--------|-------------|----------|-------------|------------|---------------------|---------|-----------|-------------|-----------|--------|--------|
| Z3U | O | SM | AT | -- | ---- | - | 66 | -- | N | I | 08 |



BUILD YOUR CODE

(Fill in the blanks with the relevant code colored in red)



FAMILY

Z3U | Zinc Uno

ENVIRONMENT

O | Outdoor

MOUNTING

SM | Surface Mounted

APPLICATION

AT | Floodlight, Beam

BEAM ANGLE

30 | 30°
45 | 45°
E1 | 10° x 54°
E2 | 15° x 36°

LED INSERTS & POWER

(High-Power LED - CRI 90+)

| | | LED Load | Initial Lumen |
|--------|--------------|----------|---------------|
| 2700°K | 927O1 | 1 W | 100 lm |
| | 927O2 | 1.5 W | 135 lm |
| | 927O3 | 2 W | 175 lm |
| 3000°K | 930O1 | 1W | 110 lm |
| | 930O2 | 1.5 W | 150 lm |
| | 930O3 | 2 W | 200 lm |
| 4000°K | 940O1 | 1 W | 115 lm |
| | 940O2 | 1.5 W | 155 lm |
| | 940O3 | 2 W | 210 lm |

CONTROL

C | Built-in driver, non dimmable
J | Remote driver, non dimmable
K | Remote driver, DALI
L | Remote driver, 1-10V
M | Remote driver, phase dim

IP RATING

66 | 66

BODY FINISH

BS | Black Smooth
WS | White Smooth
GS | Gray Smooth

EMERGENCY

N | Not Available

LAYOUT

I | I Shape

LENGTH

08 | I 8cm

PRODUCT SELECTION

UNO - GRAZER

| FAMILY | ENVIRONMENT | MOUNTING | APPLICATION | BEAM ANGLE | LED INSERTS & POWER | CONTROL | IP RATING | BODY FINISH | EMERGENCY | LAYOUT | LENGTH |
|--------|-------------|----------|-------------|------------|---------------------|---------|-----------|-------------|-----------|--------|--------|
| Z3U | O | SM | GT | -- | ---- | - | 66 | -- | N | I | 08 |



BUILD YOUR CODE

(Fill in the blanks with the relevant code colored in red)



FAMILY

Z3U | Zinc Uno

ENVIRONMENT

O | Outdoor

MOUNTING

SM | Surface Mounted

APPLICATION

GT | Grazer, Beam

BEAM ANGLE

08 | 8°
16 | 16°

LED INSERTS & POWER

(High-Power LED - CRI 90+)

| | | LED Load | Initial Lumen |
|--------|--------------|----------|---------------|
| 2700°K | 927P1 | 1 W | 80 lm |
| | 927P2 | 1.5 W | 110 lm |
| | 927P3 | 2 W | 150 lm |
| 3000°K | 930P1 | 1W | 85 lm |
| | 930P2 | 1.5 W | 115 lm |
| | 930P3 | 2 W | 150 lm |
| 4000°K | 940P1 | 1 W | 90 lm |
| | 940P2 | 1.5 W | 125 lm |
| | 940P3 | 2 W | 160 lm |

CONTROL

C | Built-in driver, non dimmable
J | Remote driver, non dimmable
K | Remote driver, DALI
L | Remote driver, 1-10V
M | Remote driver, phase dim

IP RATING

66 | 66

BODY FINISH

BS | Black Smooth
WS | White Smooth
GS | Gray Smooth

EMERGENCY

N | Not Available

LAYOUT

I | I Shape

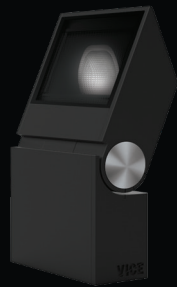
LENGTH

08 | I 8cm

PRODUCT SELECTION

UNO - WASHER

| FAMILY | ENVIRONMENT | MOUNTING | APPLICATION | BEAM ANGLE | LED INSERTS & POWER | CONTROL | IP RATING | BODY FINISH | EMERGENCY | LAYOUT | LENGTH |
|--------|-------------|----------|-------------|------------|---------------------|---------|-----------|-------------|-----------|--------|--------|
| Z3U | O | SM | WO | XX | ---- | - | 66 | -- | N | I | 08 |



BUILD YOUR CODE

(Fill in the blanks with the relevant code colored in red)



FAMILY

Z3U | Zinc Uno

ENVIRONMENT

O | Outdoor

MOUNTING

SM | Surface Mounted

APPLICATION

WO | Washer, Full Cut-Off

BEAM ANGLE

XX | Not Available

LED INSERTS & POWER

(High-Power LED - CRI 90+)

| | | LED Load | Initial Lumen |
|---------------|--------------|----------|---------------|
| 2700°K | 927M1 | 2 W | 165 lm |
| | 927M2 | 3 W | 220 lm |
| | 927M3 | 4 W | 300 lm |
| 3000°K | 930M1 | 2W | 170 lm |
| | 930M2 | 3 W | 230 lm |
| | 930M3 | 4 W | 300 lm |
| 4000°K | 940M1 | 2 W | 180 lm |
| | 940M2 | 3 W | 250 lm |
| | 940M3 | 4 W | 325 lm |
| Tunable White | 9TWD1 | 1 W | 175 lm |
| | 9TWD2 | 1.5 W | 235 lm |
| | 9TWD3 | 2 W | 315 lm |
| Warm Dimming | 9WDD1 | 1 W | 170 lm |
| | 9WDD2 | 1.5 W | 230 lm |
| | 9WDD3 | 2 W | 300 lm |

CONTROL

C | Built-in driver, non dimmable
J | Remote driver, non dimmable
K | Remote driver, DALI
L | Remote driver, 1-10V
M | Remote driver, phase dim

IP RATING

66 | 66

BODY FINISH

BS | Black Smooth
WS | White Smooth
GS | Gray Smooth

EMERGENCY

N | Not Available

LAYOUT

I | I Shape

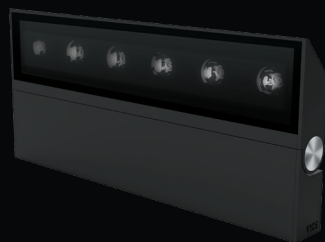
LENGTH

08 | 8cm

PRODUCT SELECTION

RAY - FLOOD LIGHT

| FAMILY | ENVIRONMENT | MOUNTING | APPLICATION | BEAM ANGLE | LED INSERTS & POWER | CONTROL | IP RATING | BODY FINISH | EMERGENCY | LAYOUT | LENGTH |
|--------|-------------|----------|-------------|------------|---------------------|---------|-----------|-------------|-----------|--------|--------|
| Z3R | O | SM | AT | -- | ---- | - | 66 | -- | N | I | -- |



BUILD YOUR CODE

(Fill in the blanks with the relevant code colored in red)



FAMILY

Z3R | Zinc Ray

ENVIRONMENT

O | Outdoor

MOUNTING

SM | Surface Mounted

APPLICATION

AT | Floodlight, Beam

BEAM ANGLE

30 | 30°
45 | 45°
E1 | 10° x 54°
E2 | 15° x 36°

LED INSERTS & POWER

(High-Power LED - CRI 90+)

| | | LED Load | Initial Lumen |
|--------|--------------|----------|---------------|
| 2700°K | 927O1 | 20 W/m | 2050 lm/m |
| | 927O2 | 30 W/m | 2750 lm/m |
| | 927O3 | 42 W/m | 3550 lm/m |
| 3000°K | 930O1 | 20 W/m | 2250 lm/m |
| | 930O2 | 30 W/m | 3050 lm/m |
| | 930O3 | 42 W/m | 4100 lm/m |
| 4000°K | 940O1 | 20 W/m | 2350 lm/m |
| | 940O2 | 30 W/m | 3150 lm/m |
| | 940O3 | 42 W/m | 4300 lm/m |

CONTROL

C | Built-in driver, non dimmable
D | Built-in driver, DALI
E | Built-in driver, 1-10V
J | Remote driver, non dimmable
K | Remote driver, DALI
L | Remote driver, 1-10V
M | Remote driver, phase dim

IP RATING

66 | 66

BODY FINISH

BS | Black Smooth
WS | White Smooth
GS | Gray Smooth

EMERGENCY

N | Not Available

LAYOUT

I | Shape

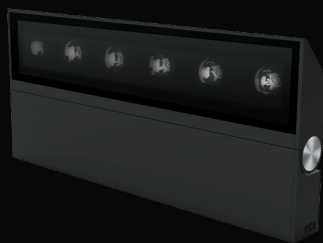
LENGTH

30 | 30cm
60 | 60cm
90 | 90cm

PRODUCT SELECTION

RAY - GRAZER

| FAMILY | ENVIRONMENT | MOUNTING | APPLICATION | BEAM ANGLE | LED INSERTS & POWER | CONTROL | IP RATING | BODY FINISH | EMERGENCY | LAYOUT | LENGTH |
|--------|-------------|----------|-------------|------------|---------------------|---------|-----------|-------------|-----------|--------|--------|
| Z3R | O | SM | GT | -- | ---- | - | 66 | -- | N | I | -- |



BUILD YOUR CODE

(Fill in the blanks with the relevant code colored in red)



FAMILY

Z3R | Zinc Ray

ENVIRONMENT

O | Outdoor

MOUNTING

SM | Surface Mounted

APPLICATION

GT | Grazer, Beam

BEAM ANGLE

08 | 8°
16 | 16°

LED INSERTS & POWER

(High-Power LED - CRI 90+)

| | | LED Load | Initial Lumen |
|--------|--------------|----------|---------------|
| 2700°K | 927P1 | 20 W/m | 1650 lm/m |
| | 927P2 | 30 W/m | 2250 lm/m |
| | 927P3 | 42 W/m | 3050 lm/m |
| 3000°K | 930P1 | 20 W/m | 1750 lm/m |
| | 930P2 | 30 W/m | 2350 lm/m |
| | 930P3 | 42 W/m | 3050 lm/m |
| 4000°K | 940P1 | 20 W/m | 1850 lm/m |
| | 940P2 | 30 W/m | 2550 lm/m |
| | 940P3 | 42 W/m | 3250 lm/m |

CONTROL

C | Built-in driver, non dimmable
D | Built-in driver, DALI
E | Built-in driver, 1-10V
J | Remote driver, non dimmable
K | Remote driver, DALI
L | Remote driver, 1-10V
M | Remote driver, phase dim

IP RATING

66 | 66

BODY FINISH

BS | Black Smooth
WS | White Smooth
GS | Gray Smooth

EMERGENCY

N | Not Available

LAYOUT

I | I Shape

LENGTH

30 | 30cm
60 | 60cm
90 | 90cm

PRODUCT SELECTION

RAY - WASHER

| FAMILY | ENVIRONMENT | MOUNTING | APPLICATION | BEAM ANGLE | LED INSERTS & POWER | CONTROL | IP RATING | BODY FINISH | EMERGENCY | LAYOUT | LENGTH |
|--------|-------------|----------|-------------|------------|---------------------|---------|-----------|-------------|-----------|--------|--------|
| Z3R | O | SM | WO | XX | ---- | - | 66 | -- | N | I | -- |



BUILD YOUR CODE

(Fill in the blanks with the relevant code colored in red)



FAMILY

Z3R | Zinc Ray

ENVIRONMENT

O | Outdoor

MOUNTING

SM | Surface Mounted

APPLICATION

WO | Washer, Full Cut-Off

BEAM ANGLE

XX | Not Available

LED INSERTS & POWER

(High-Power LED - CRI 90+)

| | | LED Load | Initial Lumen |
|---------------|--------------|----------|---------------|
| 2700°K | 927M1 | 28 W/m | 2250 lm/m |
| | 927M2 | 40 W/m | 3000 lm/m |
| | 927M3 | 56 W/m | 4100 lm/m |
| 3000°K | 930M1 | 28 W/m | 2300 lm/m |
| | 930M2 | 40 W/m | 3150 lm/m |
| | 930M3 | 56 W/m | 4100 lm/m |
| 4000°K | 940M1 | 28 W/m | 2450 lm/m |
| | 940M2 | 40 W/m | 3400 lm/m |
| | 940M3 | 56 W/m | 4400 lm/m |
| Tunable White | 9TWD1 | 14 W/m | 2400 lm/m |
| | 9TWD2 | 20 W/m | 3200 lm/m |
| | 9TWD3 | 28 W/m | 4300 lm/m |
| Warm Dimming | 9WDD1 | 14 W/m | 2300 lm/m |
| | 9WDD2 | 20 W/m | 3150 lm/m |
| | 9WDD3 | 28 W/m | 4100 lm/m |

CONTROL

C | Built-in driver, non dimmable
D | Built-in driver, DALI
E | Built-in driver, 1-10V
J | Remote driver, non dimmable

K | Remote driver, DALI
L | Remote driver, 1-10V
M | Remote driver, phase dim

IP RATING

66 | 66

BODY FINISH

BS | Black Smooth
WS | White Smooth
GS | Gray Smooth

EMERGENCY

N | Not Available

LAYOUT

I | I Shape

LENGTH

30 | 30cm
60 | 60cm
90 | 90cm

PRODUCT SELECTION

BOLLARD - WASHER

| FAMILY | ENVIRONMENT | MOUNTING | APPLICATION | BEAM ANGLE | LED INSERTS & POWER | CONTROL | IP RATING | BODY FINISH | EMERGENCY | LAYOUT | HEIGHT |
|--------|-------------|----------|-------------|------------|---------------------|---------|-----------|-------------|-----------|--------|--------|
| Z3B | O | SM | WO | XX | ---- | - | 66 | -- | N | I | -- |



BUILD YOUR CODE

(Fill in the blanks with the relevant code colored in red)



FAMILY

Z3B | Zinc Bollard

ENVIRONMENT

O | Outdoor

MOUNTING

SM | Surface Mounted

APPLICATION

WO | Washer, Full Cut-Off

BEAM ANGLE

XX | Not Available

LED INSERTS & POWER

(High-Power LED - CRI 90+)

| | | LED Load | Initial Lumen |
|---------------|--------------|----------|---------------|
| 2700°K | 927M1 | 2 W | 165 lm |
| | 927M2 | 3 W | 220 lm |
| | 927M3 | 4 W | 300 lm |
| 3000°K | 930M1 | 2W | 170 lm |
| | 930M2 | 3 W | 230 lm |
| | 930M3 | 4 W | 300 lm |
| 4000°K | 940M1 | 2 W | 180 lm |
| | 940M2 | 3 W | 250 lm |
| | 940M3 | 4 W | 325 lm |
| Tunable White | 9TWD1 | 1 W | 175 lm |
| | 9TWD2 | 1.5 W | 235 lm |
| | 9TWD3 | 2 W | 315 lm |
| Warm Dimming | 9WDD1 | 1 W | 170 lm |
| | 9WDD2 | 1.5 W | 230 lm |
| | 9WDD3 | 2 W | 300 lm |

CONTROL

C | Built-in driver, non dimmable
D | Built-in driver, DALI
E | Built-in driver, 1-10V
J | Remote driver, non dimmable

K | Remote driver, DALI
L | Remote driver, 1-10V
M | Remote driver, phase dim

IP RATING

66 | 66

BODY FINISH

BS | Black Smooth
WS | White Smooth
GS | Gray Smooth

EMERGENCY

N | Not Available

LAYOUT

I | I Shape

HEIGHT

60 | 60cm
75 | 75cm
90 | 90cm



VICELIGHTING.COM